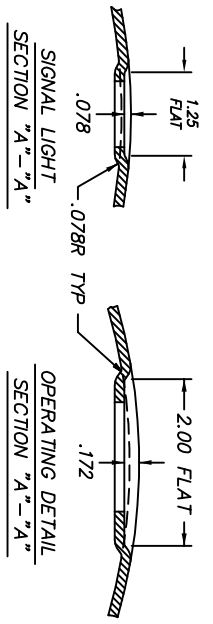
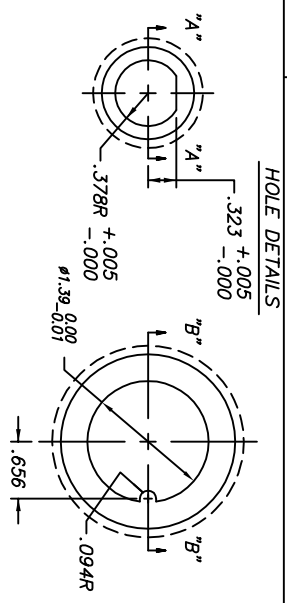
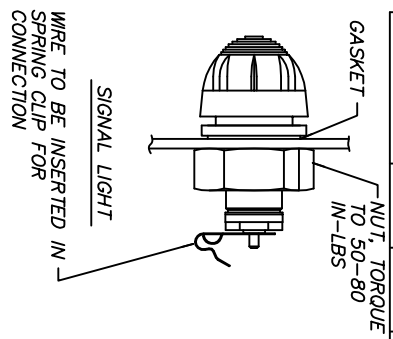
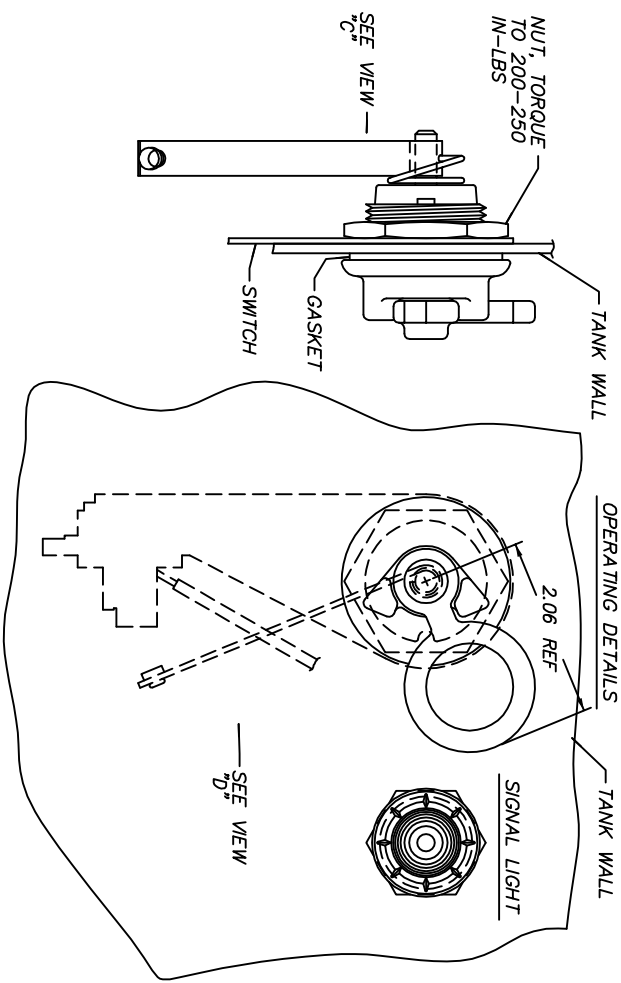




UNLESS OTHERWISE SPECIFIED, TOLERANCES ARE	±	±	±
SURFACES	2 PL DEC	3 PL DEC	ANGLES
			DEG

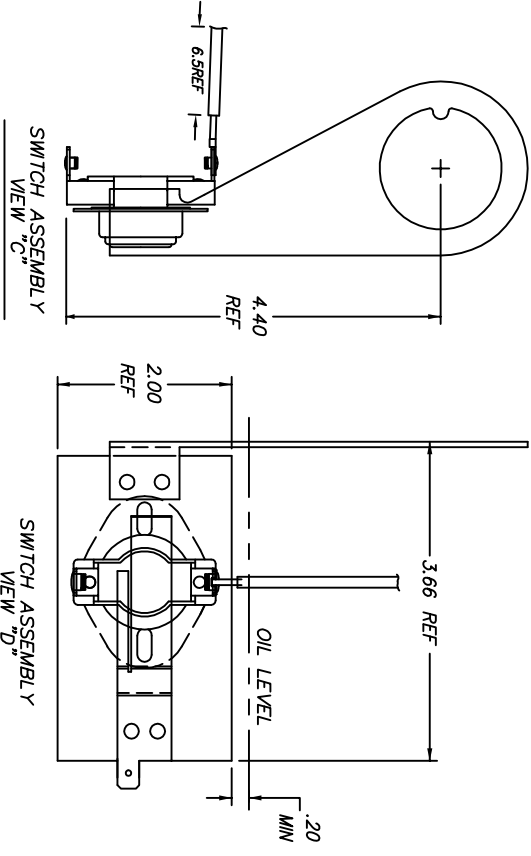
TITLE
OUTLINE (OVERLOAD SWITCH ASM)
 FIRST MADE FOR
 SIGNAL LIGHT SWITCH
 CONT ON SH 2
32B928009
 SH 1



Model Number
 7591ZB1099
 WITH SIGNAL LIGHT

Model Number
 7591ZB1399
 WITHOUT SIGNAL LIGHT

- NOTES:
1. SWITCHES CLOSES AT 110°C ±4°C
 2. REPEATED MANUAL CLOSING OF THE SWITCH (I.E. BY SNAPPING THE BIMETALLIC DISC.) CAN CAUSE CALIBRATION CHANGE.
 3. IT IS RECOMMENDED THAT THE DEVICE BE MOUNTED WITH THE UPPER EDGE OF THE SUPPORT NO MORE THAN 1" BELOW THE OIL LEVEL.
 4. TERMINAL CONNECTION ARE TO BE MADE TO SCREW TERMINALS ONLY



REVISIONS	
1	G.DAVIS FEB 22,1991 ADD 7591ZB1199
2	D.KANUPP 7/27/94 ADD SHT 2
3	S.A. WILSON 26 OCT 95 ADD NOTE 3 (ECN# F55)
4	J.S.Jones 29 Apr 97 Chg Dim ECN # F169
5	STULPIN 29-JAN-99 UPDATED TEMPLATE
6	GILLAND 9/30/06 UPDATED SIGNAL LITE MOUNT HOLE DIMENSIONS
7	N. Adams 10/01/04 Updated Template Border
8	N. Adams 04/29/05 Added in new switch design ECN B189
9	N. Adams 07/31/06 Updated signal light nut ECN B286

MADE BY: G.DAVIS SEPT. 01,1989
 ISSUED BY: Nicholas Adams 07/31/06

APPROVALS

ECI

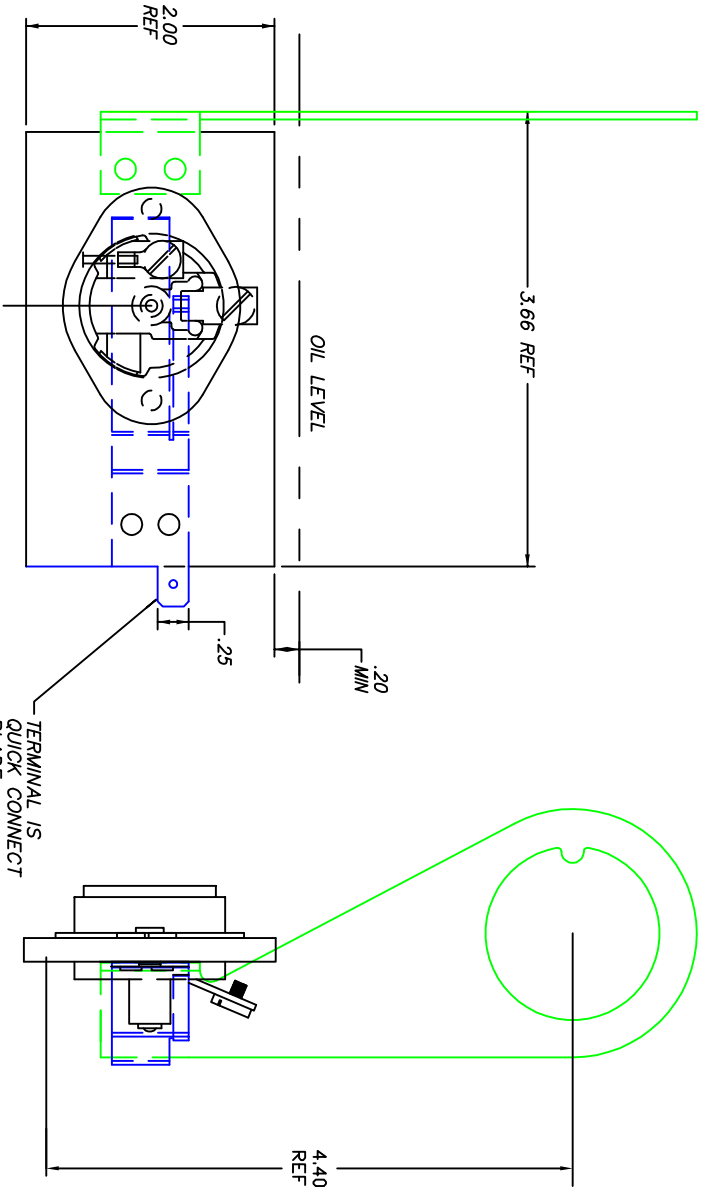
PRINTS

32B928009 SH 1

ERMCO-872

UNLESS OTHERWISE SPECIFIED USE THE FOLLOWING TOLERANCES ON DIMENSIONS			
SURFACES	2 PL DEC	3 PL DEC	ANGLES
✓	f	f	f DEG

EMCO COMPONENTS INC	3101 32B928009
TITLE	CONT ON SH
OUTLINE - OVERLOAD SWITCH ASM	SH 2
FIRST MADE FOR TBD - CPO	SIGNAL LIGHT SWITCH



SWITCH ASSEMBLY
VIEW "E"

SWITCH ASSEMBLY
VIEW "F"

FOR O.E.M. REFERENCE
SEE 7591ZB1299
(A2591K309603)

NOTE:
SEE SHEET 1 FOR NOTES.

A4-10B

07/06

REVISIONS		APPROVALS		ECl		3101 32B928009		PRINTS	
NO	DESCRIPTION	DATE	BY	DATE	BY	DATE	BY	DATE	BY
1	Updated signal light nut FCN B286	07/31/06	N. Adams						
2									
3									
4									
5									
6									
7									
8									
9									
10									
11									
12									
13									
14									
15									
16									
17									
18									
19									
20									
21									
22									
23									
24									
25									
26									
27									
28									
29									
30									
31									
32									
33									
34									
35									
36									
37									
38									
39									
40									
41									
42									
43									
44									
45									
46									
47									
48									
49									
50									
51									
52									
53									
54									
55									
56									
57									
58									
59									
60									
61									
62									
63									
64									
65									
66									
67									
68									
69									
70									
71									
72									
73									
74									
75									
76									
77									
78									
79									
80									
81									
82									
83									
84									
85									
86									
87									
88									
89									
90									
91									
92									
93									
94									
95									
96									
97									
98									
99									
100									